



EPIC RESEARCH

KLSE WEEKLY REPORT – 15-Oct-2018

WEEKLY OUTLOOK FTFBM KLSE, MARKET STATISTICS

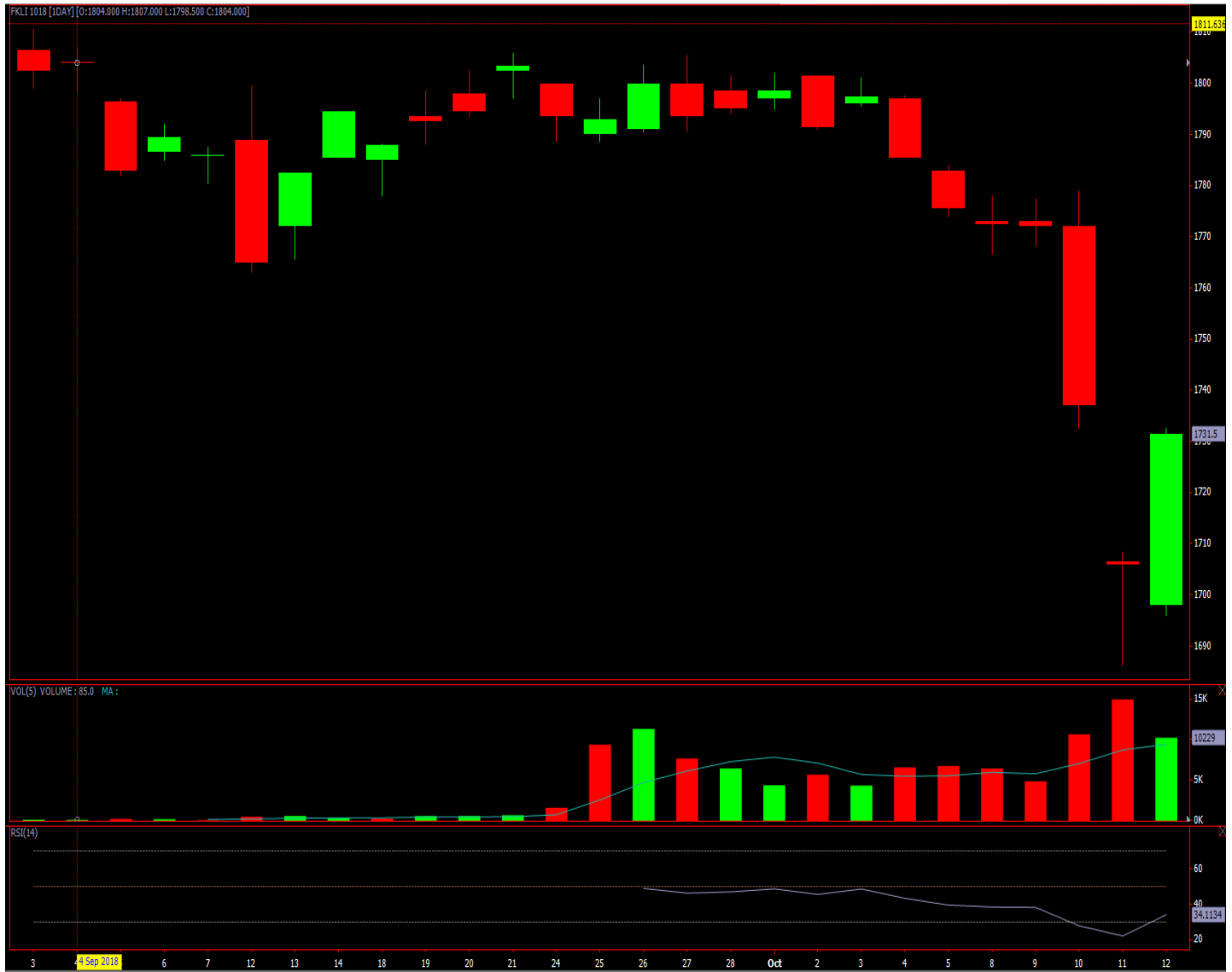
Economic Calendar

RECOMMENDATION



Epic Research Pvt. Ltd.

WEEKLY OUTLOOK FTFBM KLSE



The benchmark FTSE Bursa Malaysia KLCI (FBM KLCI) **GAINED**—22.250 points ended 1730.740 to after hovering 1732.160 throughout the day. The RSI at 32.199.

TOP 5 VALUE TRADED

Counter Name	Open	Range	Change
HIBISCS	1.18	-0.01	86,181
SAPNRG	0.36	-0.005	84,764
BORNOIL	0.055	-0.005	65,425
MYEG	1.56	+0.09	58,272
GAMUDA	2.35	+0.05	54,723

TOP 5 GAINERS

Counter Name	Open	Range	Change
PETGAS	18.48	+1.24	1,042
F&N	36.04	+0.40	928
UMS	2.37	+0.37	0
SAM	8.00	+0.36	114
UTDPLT	26.90	+0.32	12

TOP 5 LOSERS

Counter Name	Open	Range	Change
NESTLE	144.10	-0.90	27
TGUAN-LA	2.30	-0.29	15
TIMECOM	7.70	-0.23	1,083
HSI-H4U	1.73	-0.22	7
HSI-H4I	0.955	-0.205	780

ECONOMIC CALENDAR

Time	Cur.	Event	Forecast	Previous
Monday, October 15, 2018				
All Day		Holiday Thailand - The Passing of H.M. the Late King		
18:00	USD	Core Retail Sales (MoM) (Sep)	0.3%	0.3%
18:00	USD	Retail Sales (MoM) (Sep)	0.5%	0.1%
Tuesday, October 16, 2018				
03:15	NZD	CPI (QoQ) (Q3)	0.7%	0.4%
06:00	AUD	RBA Meeting Minutes		
14:00	GBP	Average Earnings Index +Bonus (Aug)	2.6%	2.6%
14:00	GBP	Claimant Count Change (Sep)	7.0K	8.7K
14:30	EUR	German ZEW Economic Sentiment (Oct)	-12.5	-10.6
19:30	USD	JOLTs Job Openings (Aug)		6.939M
Wednesday, October 17, 2018				
All Day		Holiday Hong Kong - Chung Yeung Day		
14:00	GBP	CPI (YoY) (Sep)	2.6%	2.7%
14:30	EUR	CPI (YoY) (Sep)	2.1%	2.1%
18:00	USD	Building Permits (Sep)	1.280M	1.249M
20:00	USD	Crude Oil Inventories		
23:30	USD	FOMC Meeting Minutes		
Thursday, October 18, 2018				
All Day		Holiday India - Dasara		
06:00	AUD	Employment Change (Sep)	15.0K	44.0K
14:00	GBP	Retail Sales (MoM) (Sep)	-0.2%	0.3%
18:00	USD	Philadelphia Fed Manufacturing Index (Oct)	20.0	22.9
Friday, October 19, 2018				
07:30	CNY	GDP (YoY) (Q3)	6.6%	6.7%
07:30	CNY	Industrial Production (YoY) (Sep)	6.0%	6.1%
18:00	CAD	Core CPI (MoM) (Sep)		0.1%
18:00	CAD	Core Retail Sales (MoM) (Aug)		0.9%
19:30	USD	Existing Home Sales (Sep)	5.34M	5.34M

RECOMMENDATION

Date	Stocks	Strategy	Entry level	Target	Stop loss	Position
12/10/2018	SANBHUMI	BUY	0.350	0.380-0.410	0.320	
12/10/2018	CUSCAPI	BUY	0.245	0.260-0.270	0.230	
12/10/2018	LIONIND	BUY	0.800	0.845-0.885	0.765	
12/10/2018	FRONTKN	BUY	0.880	0.925-0.970	0.840	

PERFORMANCE OF PREVIOUS WEEK

Date	Stocks	Strategy	Entry level	Target	Stop loss	Remark
5/10/2018	ALAM	BUY	0.125-0.120	0.135-0.155	0.115	TARGET
5/10/2018	MRCB	BUY	0.710-0.715	0.750-0.800	0.675	TARGET
5/10/2018	MYEG	BUY	1.700	1.800-1.950	1.600	NOT EXECUTED
5/10/2018	CIMB	BUY	6.100	6.300-6.600	5.900	NOT EXECUTED



EPIC RESEARCH PVT. LTD.

EPIC RESEARCH INDIA

411 Milinda Manor (Suites 409 – 417)
2 RNT Marg Opp Central Mall Indore (M.P.)
Hotline: +91 731 664 2300
Or give us a missed call at 026 5309 0639

HNI & NRI SALES CONTACT

2117 Arbor Vista Dr.
Charlotte (NC)
Cell: +1 704 249 2315

Disclaimer

The information and views in this report, our website & all the service we provide are believed to be reliable, but we do not accept any responsibility (or liability) for errors of fact or opinion. Users have the right to choose the product/s that suits them the most.

Sincere efforts have been made to present the right investment perspective. The information contained herein is based on analysis and up on sources that we consider reliable. This material is for personal information and based upon it & takes no responsibility. The information given herein should be treated as only factor, while making investment decision. The report does not provide individually tailor-made investment advice.

Epic research recommends that investors independently evaluate particular investments and strategies, and encourages investors to seek the advice of a financial adviser. Epic research shall not be responsible for any transaction conducted based on the information given in this report, which is in violation of rules and regulations of NSE and BSE.

The share price projections shown are not necessarily indicative of future price performance. The information herein, together with all estimates and forecasts, can change without notice. Analyst or any person related to epic research might be holding positions in the stocks recommended. It is understood that anyone who is browsing through the site has done so at his free will and does not read any views expressed as a recommendation for which either the site or its owners or anyone can be held responsible for. Any surfing and reading of the information is the acceptance of this disclaimer. All Rights Reserved. Investment in equity & bullion market has its own risks.

We, however, do not vouch for the accuracy or the completeness thereof. We are not responsible for any loss incurred whatsoever for any financial profits or loss which may arise from the recommendations above. Epic research does not purport to be an invitation or an offer to buy or sell any financial instrument. Our Clients (Paid or Unpaid), any third party or anyone else have no rights to forward or share our calls or SMS or Report or Any Information Provided by us to/with anyone which is received directly or indirectly by them. If found so then Serious Legal Actions can be taken.

Give us a missed call at +60350219047

Visit us @ www.epicresearch.my